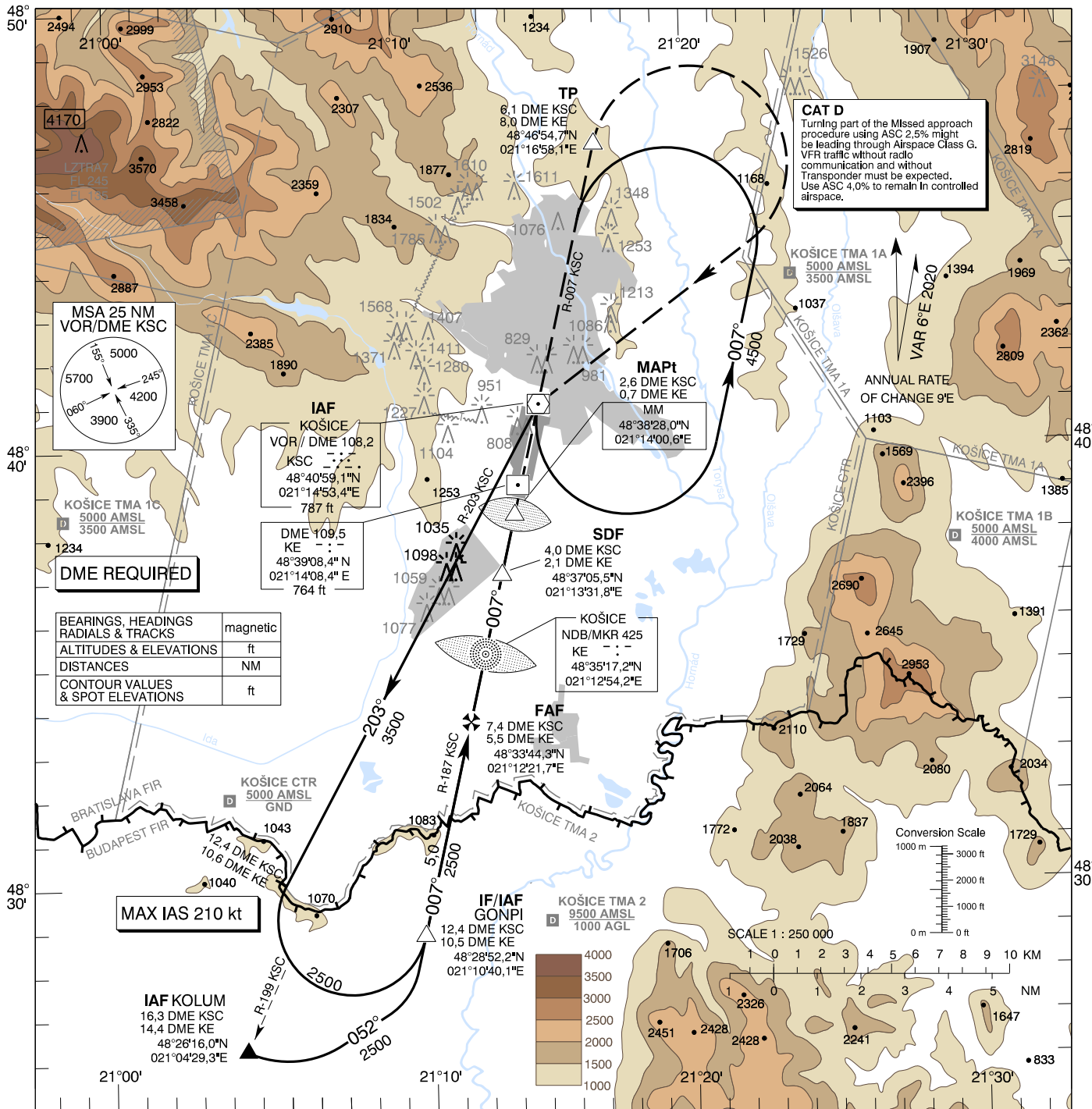


**INSTRUMENT
APPROACH
CHART - ICAO**

TRANSITION ALTITUDE
10 000 ft
AD ELEV 755 - 28 hPa
THR RWY 01 ELEV 738,4 - 27 hPa

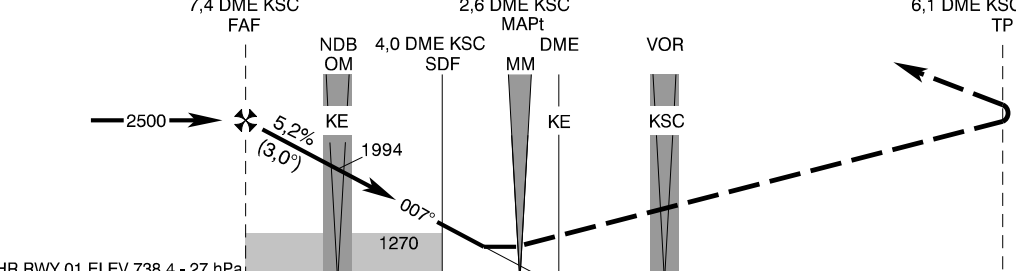
KOŠICE APPROACH / RADAR 129,350 (119,850)
KOŠICE TOWER 120,400 (118,900)
KOŠICE ATIS 133,730

**KOŠICE (LZKZ)
VOR RWY 01
ACFT CAT A/B/C/D**



BEARINGS, HEADINGS	magnetic
RADIALS & TRACKS	
ALTITUDES & ELEVATIONS	ft
DISTANCES	NM
CONTOUR VALUES & SPOT ELEVATIONS	ft

MAX IAS 210 kt



MISSED APPROACH
Climb to TP (6,1 DME KSC/8,0 DME KE), turn RIGHT to VOR KSC, climbing to 4500 AMSL and hold. MAX IAS 160 kt (ACFT CAT A, B, C)/185 kt (ACFT CAT D) until established on track to VOR KSC.

CHANGES: LZTRA07 renamed to LZTRAT

THR RWY 01 ELEV 738,4 - 27 hPa
NM to/from THR RWY 01

	OCA (OCH)	ASC	Altitude			
			A	B	C	D
Straight-in Approach	without SDF	2,5% ft	1270 (532)			
	with SDF	4,0% ft	-			
Circling	without SDF	2,5% ft	1190 (452)			
	with SDF	4,0% ft	-			
			1420 (665)	1680 (925)	2040 (1285)	2430 (1675)

DME KSC	NM	7,0	6,0	5,0	4,0	3,0
ALTITUDES	ft	2359	2041	1722	1404	1086

Ground speed	kt	70	90	100	120	140	160	180
FAF - MAPt (4,9 NM)	min:sec	4:10	3:14	2:55	2:26	2:05	1:49	1:37
Rate of descent (5,2%)	ft/min	372	478	531	637	743	849	955

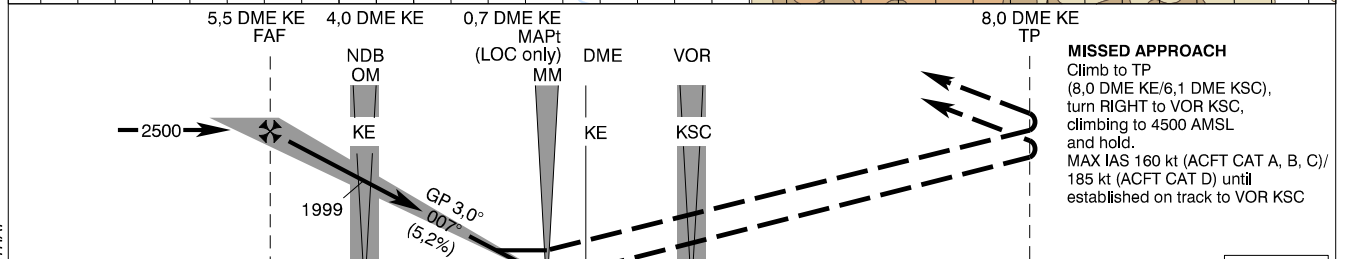
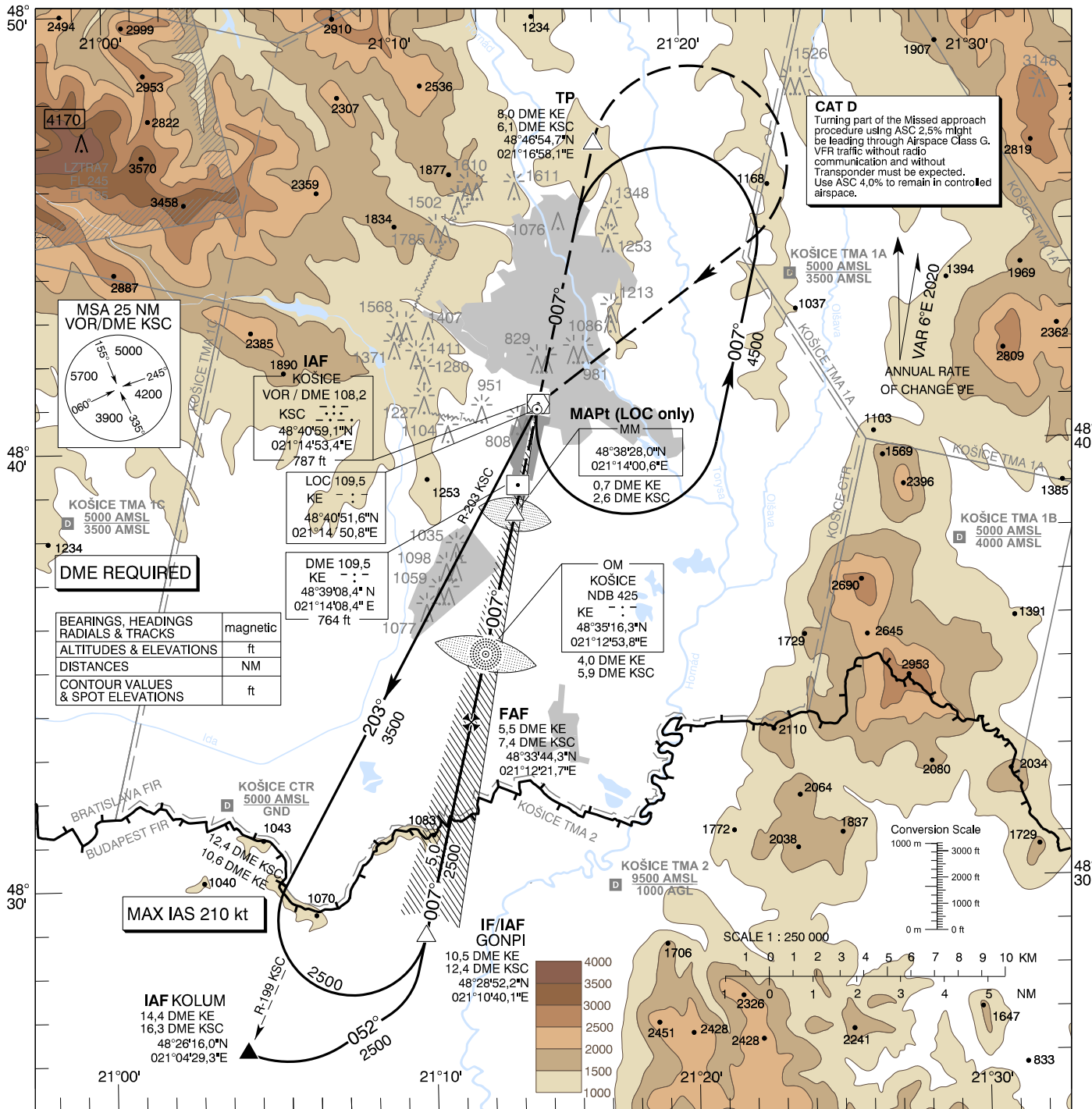
Timing not authorized for defining the MAPt

**INSTRUMENT
APPROACH
CHART - ICAO**

TRANSITION ALTITUDE
10 000 ft
AD ELEV 755 - 28 hPa
THR RWY 01 ELEV 738,4 - 27 hPa

KOŠICE APPROACH / RADAR 129,350 (119,850)
KOŠICE TOWER 120,400 (118,900)
KOŠICE ATIS 133,730

**KOŠICE (LZKZ)
ILS CAT I & II or LOC RWY 01
ACFT CAT A/B/C/D**



THR RWY 01 ELEV 738,4 - 27 hPa
NM to/from THR RWY 01

	OCA (OCH)	ASC	Distance (NM)			
			A	B	C	D
Straight-in Approach	CAT I	2,5% ft	899 (161)	911 (173)	919 (181)	930 (192)
		4,0% ft	-	-	-	930 (192)
	CAT II	2,5% ft	811 (73)	828 (90)	840 (102)	854 (116)
		4,0% ft	-	-	-	854 (116)
LOC	2,5% ft	-	-	1100 (362)	-	
	4,0% ft	-	-	-	1100 (362)	
Circling			1420 (665)	1680 (925)	2040 (1285)	2430 (1675)

DME KE	NM	5,0	4,0	3,0	2,0	1,0
ALTITUDES	ft	2331	2012	1694	1375	1056

Ground speed	kt	70	90	100	120	140	160	180
FAF - MAPt (4,9 NM)	min:s	4:10	3:14	2:55	2:26	2:05	1:49	1:37
RATE of descent (5,2%)	ft/min	372	478	531	637	743	849	955

Timing not authorized for defining the MAPt

CHANGES: LZTRA07 renamed to LZTRAT

**INSTRUMENT
APPROACH
CHART - ICAO**

TRANSITION ALTITUDE
10 000 ft

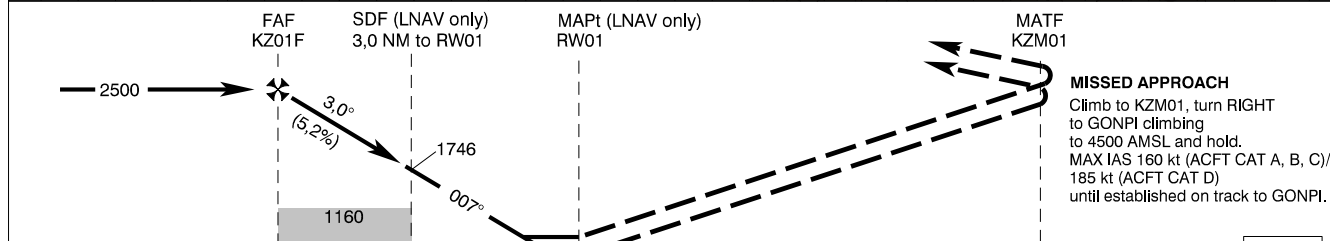
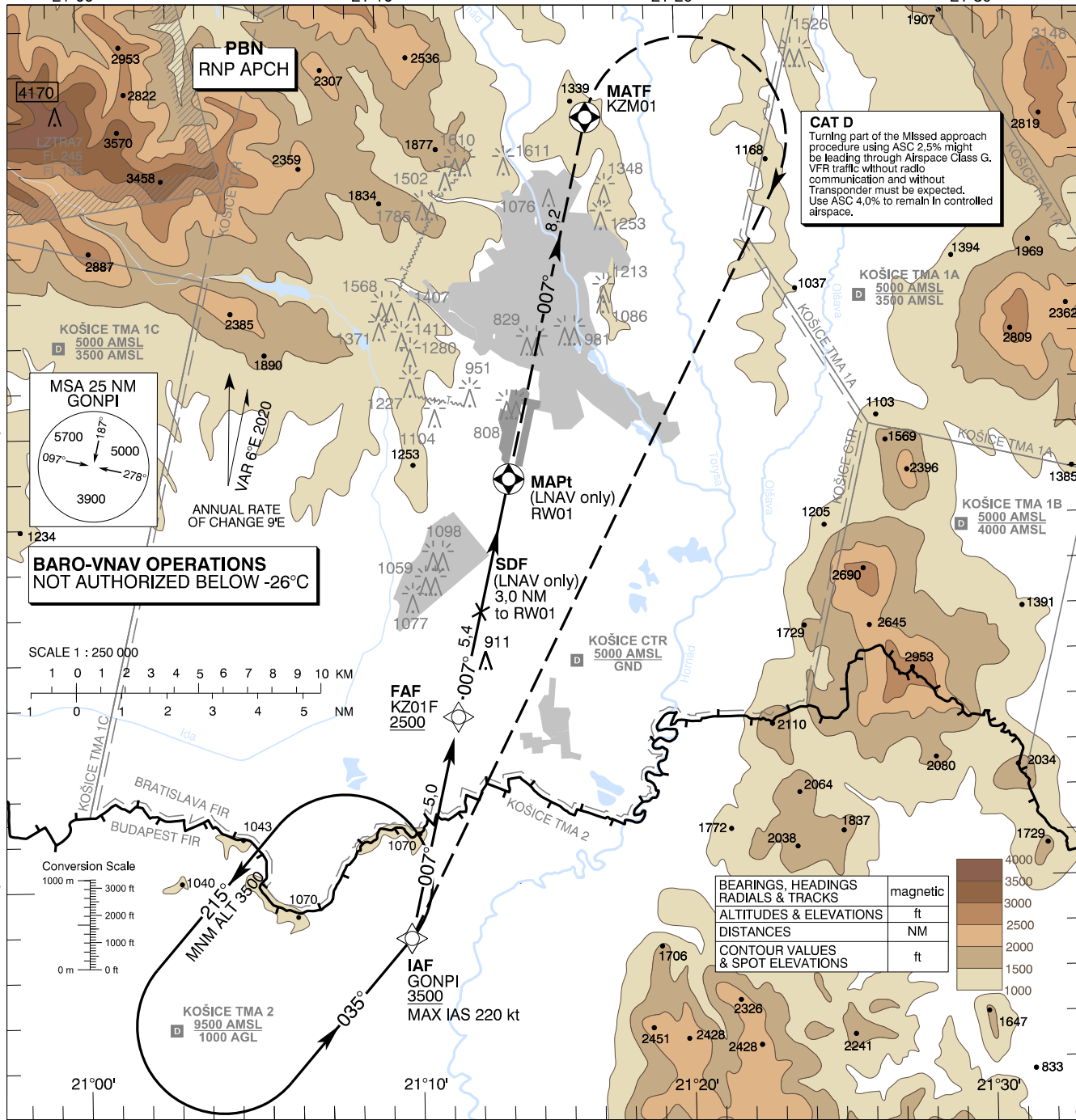
AD ELEV 755 -28 hPa
THR RWY 01 ELEV 738,4 -27 hPa

KOŠICE APPROACH / RADAR 129,350 (119,850)
KOŠICE TOWER 120,400 (118,900)
KOŠICE ATIS 133,730

EGNOS
CH 59257
E01A

**KOŠICE (LZKZ)
RNP RWY 01
ACFT CAT A/B/C/D**

21°00' 21°10' 21°20' 21°30'



THR RWY 01 ELEV 738,4 -27 hPa
NM to/from THR RWY 01

OCA (OCH)		ASC	A	B	C	D
Straight-in Approach	LNAV	2.5%	1100 (362)			
		4.0%	-			
	LNAV /VNAV	2.5%	984 (245)	996 (257)	1004 (265)	1100 (362)
		4.0%	-			
LPV	2.5%	899 (161)	911 (173)	919 (181)	930 (192)	
	4.0%	-				
Circling			1420 (665)	1680 (925)	2040 (1285)	2430 (1675)

Dist RWY01 (THR) NM	5,0	4,0	3,0	2,0	1,0
ALTITUDES ft	2383	2064	1746	1427	1109

Ground speed kt	70	90	100	120	140	160	180
KZ01F - RW01 (5,4 NM) min:sec	4:36	3:35	3:13	2:41	2:18	2:01	1:47
Rate of descent (5,2%) ft/min	372	478	531	637	743	849	955

Timing not authorized for defining the MAPt

Instrument Approach Procedure Coding Table: Košice RNP RWY 01

Path Terminator	Waypoint				Course / Track MAG (True)	DIST	Turn Direction	Constraints		Navigation Specification
	Identifier	Type	Flyover	Coordinates				Level	Speed	
IF	GONPI	IAF	NO	48°28'52,23"N 021°10'40,14"E	-	-	-	A3500+	K220-	RNP APCH
TF	KZ01F	FAF	NO	48°33'44,35"N 021°12'21,67"E	007° (013,0°)	5,0 NM	-	A2500+	-	RNP APCH
TF	RW01	MAPt	YES	48°38'58,01"N 021°14'11,06"E	007° (013,0°)	5,4 NM	-	-	-	RNP APCH
TF	KZM01	MATF	YES	48°46'54,74"N 021°16'58,07"E	007° (013,0°)	8,2 NM	-	-	K160- (CAT A, B, C) K185- (CAT D)	RNP APCH
DF	GONPI	MAHF	YES	48°28'52,23"N 021°10'40,14"E	-	-	RIGHT	A4500	-	RNP APCH

RNAV Holding							
Holding Point	Inbound Track MAG (True)	Turn Direction	MAX IAS	Minimum Holding Altitude	Time	DIST MAHF	Remarks
GONPI	035° (040,9°)	LEFT	-	A3500	1 MIN	-	-

SBAS FAS Data Block Coding Table Košice RNP RWY 01

Input data	
Operation Type	0
SBAS Provider	1 (EGNOS)
Airport Identifier	LZKZ
Runway	01
Runway Letter	0 (None)
Approach Performance Designator	0
Route Indicator	
Reference Path Data Selector	0
Reference Path Identifier	E01A
LTP/FTP Latitude	483858.0125N
LTP/FTP Longitude	0211411.0615E
LTP/FTP Ellipsoidal Height (metres)	265.5
FPAP Latitude	484041.9605N
Delta FPAP Latitude (seconds)	103.9480
FPAP Longitude	0211447.4000E
Delta FPAP Longitude (seconds)	36.3385
Threshold Crossing Height	15.8
TCH Units Selector	1 (meters)
Glidepath Angle (degrees)	3.00
Course Width (metres)	105.00
Length Offset (metres)	200
HAL (metres)	40.0
VAL (metres)	35.0
Output data	
Data Block	10 1A 0B 1A 0C 01 00 00 01 31 30 05 B9 C9 E0 14 EB 19 1D 09 5F 1E 18 2C 03 E5 1B 01 3C 81 2C 01 64 19 C8 AF C9 00 03 41
Calculated CRC Value	C9000341
Required Additional Data	
ICAO Code	LZ
LTP/FTP Orthometric Height (metres)	225.1

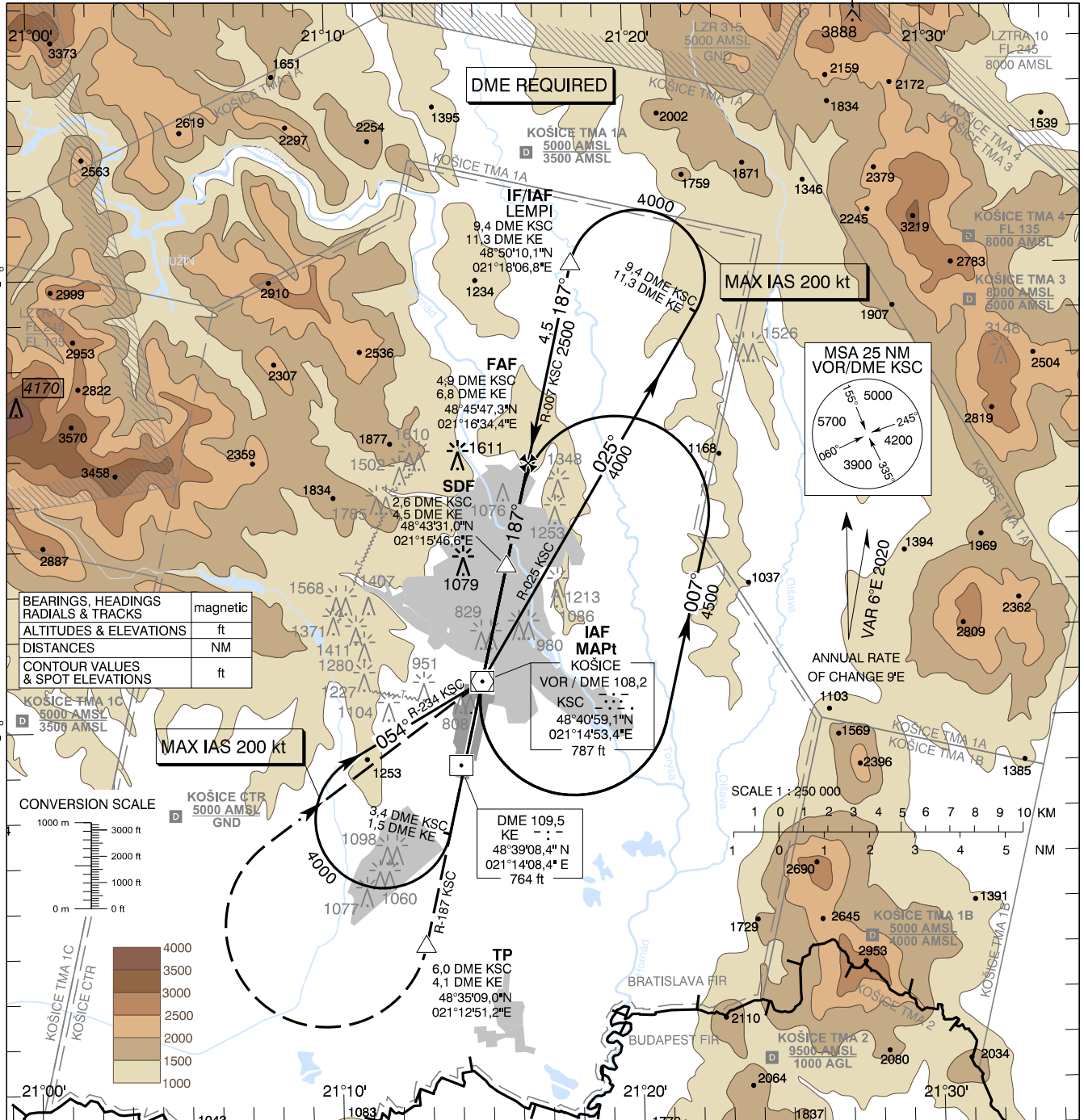
**INSTRUMENT
APPROACH
CHART - ICAO**

TRANSITION ALTITUDE
10 000 ft

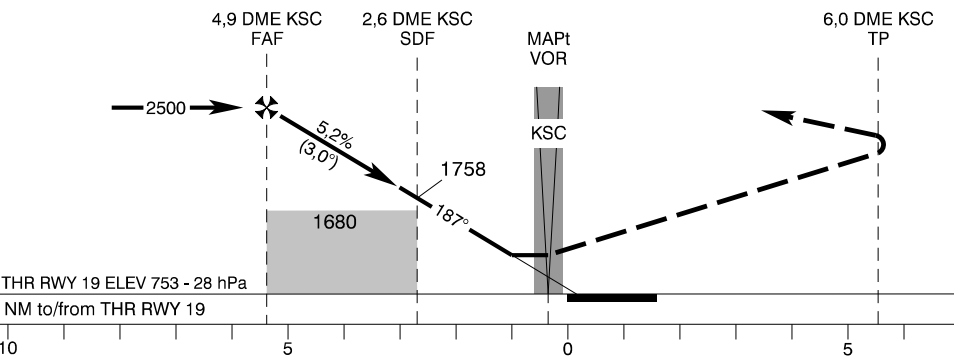
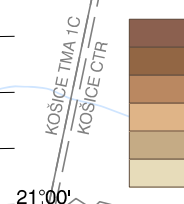
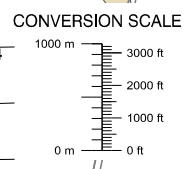
AD ELEV 755 - 28 hPa
THR RWY 19 ELEV 752,7 - 28 hPa

KOŠICE APPROACH / RADAR 129,350 (119,850)
KOŠICE TOWER 120,400 (118,900)
KOŠICE ATIS 133,730

**KOŠICE (LZKZ)
VOR RWY 19
ACFT CAT A/B/C/D**



BEARINGS, HEADINGS RADIALS & TRACKS	magnetic
ALTITUDES & ELEVATIONS	ft
DISTANCES	NM
CONTOUR VALUES & SPOT ELEVATIONS	ft



MISSED APPROACH
Climb to TP (6,0 DME KSC/4,1 DME KE),
turn RIGHT to VOR KSC climbing
to 4500 AMSL and hold.
MAX IAS 185 kt until established
on track to VOR KSC.

THR RWY 19 ELEV 753 - 28 hPa
NM to/from THR RWY 19

OCA (OCH)		A	B	C	D
Straight-In Approach	without SDF	ft 1680 (925)			
	with SDF	ft 1250 (495)			
Circling		ft 1420 (665)	ft 1680 (925)	ft 2040 (1285)	ft 2430 (1675)

DME KSC	NM	5,0	4,0	3,0	2,0	1,0
ALTITUDES	ft	2521	2203	1884	1566	1247

Ground speed	kt	70	90	100	120	140	160	180
FAF - MAPt (4,9 NM)	min:sec	4:14	3:17	2:58	2:28	2:07	1:51	1:39
Rate of descent (5,2%)	ft/min	372	478	531	637	743	849	955

Timing not authorized for defining the MAPt

CHANGES: LZTRA07 renamed to LZTRAT

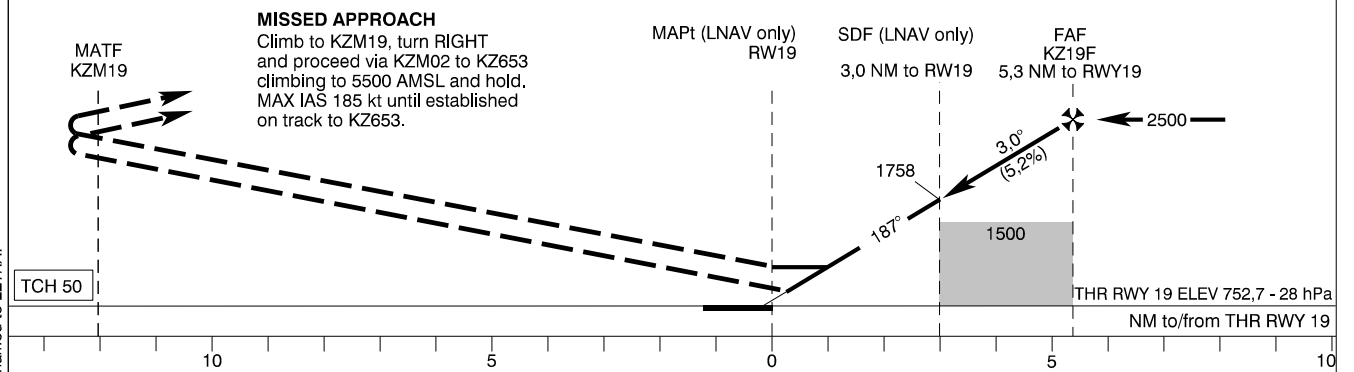
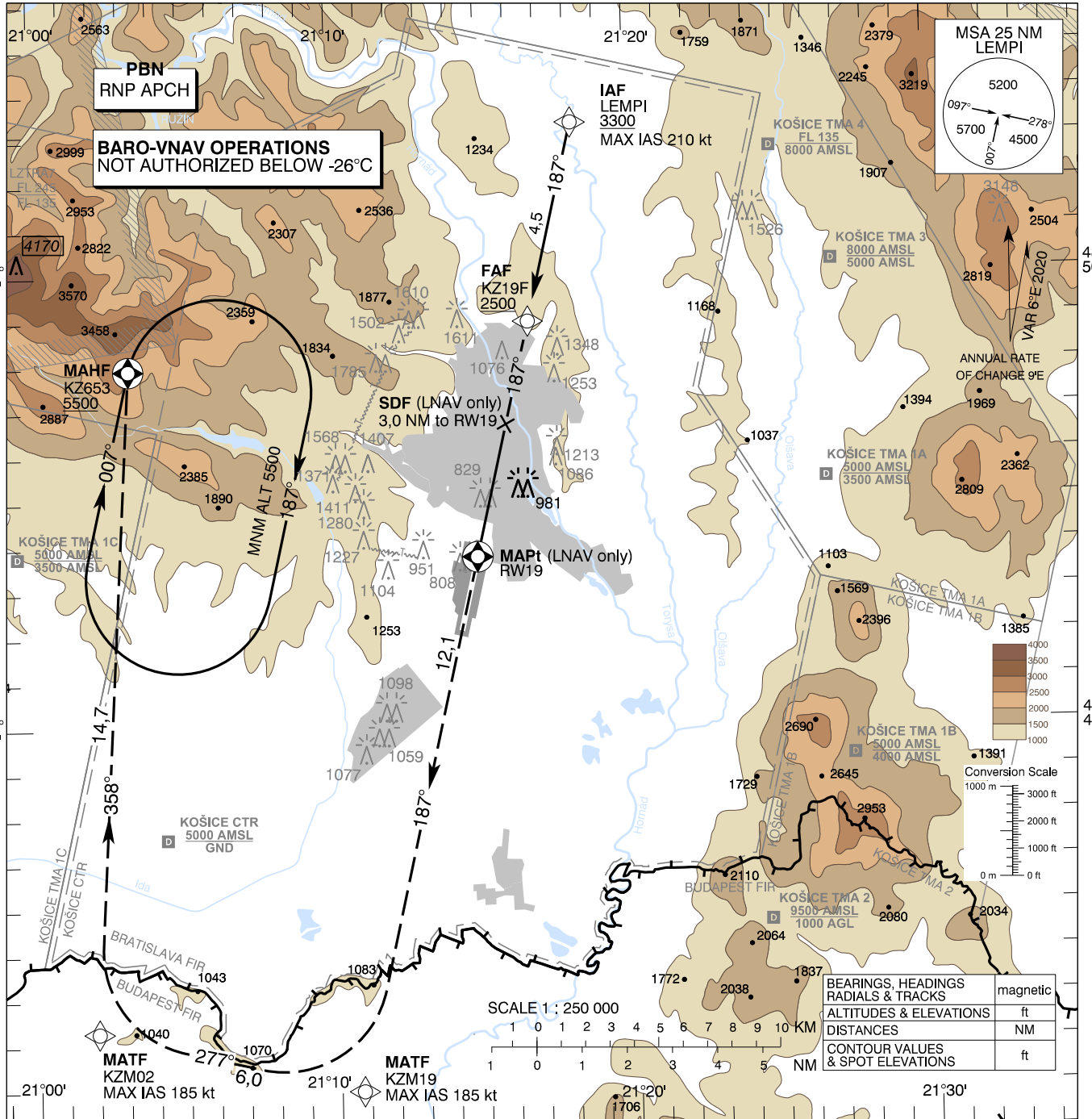
INSTRUMENT
APPROACH
CHART - ICAO

TRANSITION ALTITUDE
10 000 ft
AD ELEV 755 - 28 hPa
THR RWY 19 ELEV 752,7 - 28 hPa

KOŠICE APPROACH / RADAR 129,350 (119,850)
KOŠICE TOWER 120,400 (118,900)
KOŠICE ATIS 133,730

EGNOS
CH 65545
E19A

KOŠICE (LZKZ)
RNP RWY 19
ACFT CAT A/B/C/D
21°30'



OCA (OCH)		A	B	C	D	Dist RWY19 (THR) NM	5,0	4,0	3,0	2,0	1,0				
Straight-in Approach	LNAV	ft 1140 (385)				ALTITUDES	ft	2395	2076	1758	1440	1121			
	LNAV/VNAV	ft	1003 (251)	1015 (263)	1023 (271)	1034 (282)	Ground speed	kt	70	90	100	120	140	160	180
	LPV	ft	951 (198)	963 (210)	971 (218)	982 (229)	KZ19F - RWY19 (5,3 NM)	min:sec	4:34	3:33	3:12	2:40	2:17	2:00	1:47
Circling	ft	1420 (665)	1680 (925)	2040 (1285)	2430 (1675)	Rate of descent (5,2%)	ft/min	372	478	531	637	743	849	955	

Instrument Approach Procedure Coding Table: Košice RNP RWY 19

Path Terminator	Waypoint				Course / Track MAG (True)	DIST	Turn Direction	Constraints		Navigation Specification
	Identifier	Type	Flyover	Coordinates				Level	Speed	
IF	LEMPI	IAF	NO	48°50'10,08"N 021°18'06,77"E	-	-	-	A3300+	K210-	RNP APCH
TF	KZ19F	FAF	NO	48°45'47,29"N 021°16'34,39"E	187° (193,1°)	4,5 NM	-	A2500+	-	RNP APCH
TF	RW19	MAPt	YES	48°40'35,81"N 021°14'45,25"E	187° (193,1°)	5,3 NM	-	-	-	RNP APCH
TF	KZM19	MATF	NO	48°28'48,98"N 021°10'39,00"E	187° (193,0°)	12,1 NM	-	-	K185-	RNP APCH
TF	KZM02	MATF	NO	48°30'09,51"N 021°01'51,52"E	277° (283,0°)	6,0 NM	RIGHT	-	K185-	RNP APCH
TF	KZ653	MAHF	YES	48°44'47,42"N 021°03'09,92"E	358° (003,4°)	14,7 NM	RIGHT	A5500+	-	RNP APCH

RNAV Holding							
Holding Point	Inbound Track MAG (True)	Turn Direction	MAX IAS	Minimum Holding Altitude	Time	DIST MAHF	Remarks
KZ653	007° (012,9°)	RIGHT	-	A5500	1 MIN	-	-

SBAS FAS Data Block Coding Table Košice RNP RWY 19

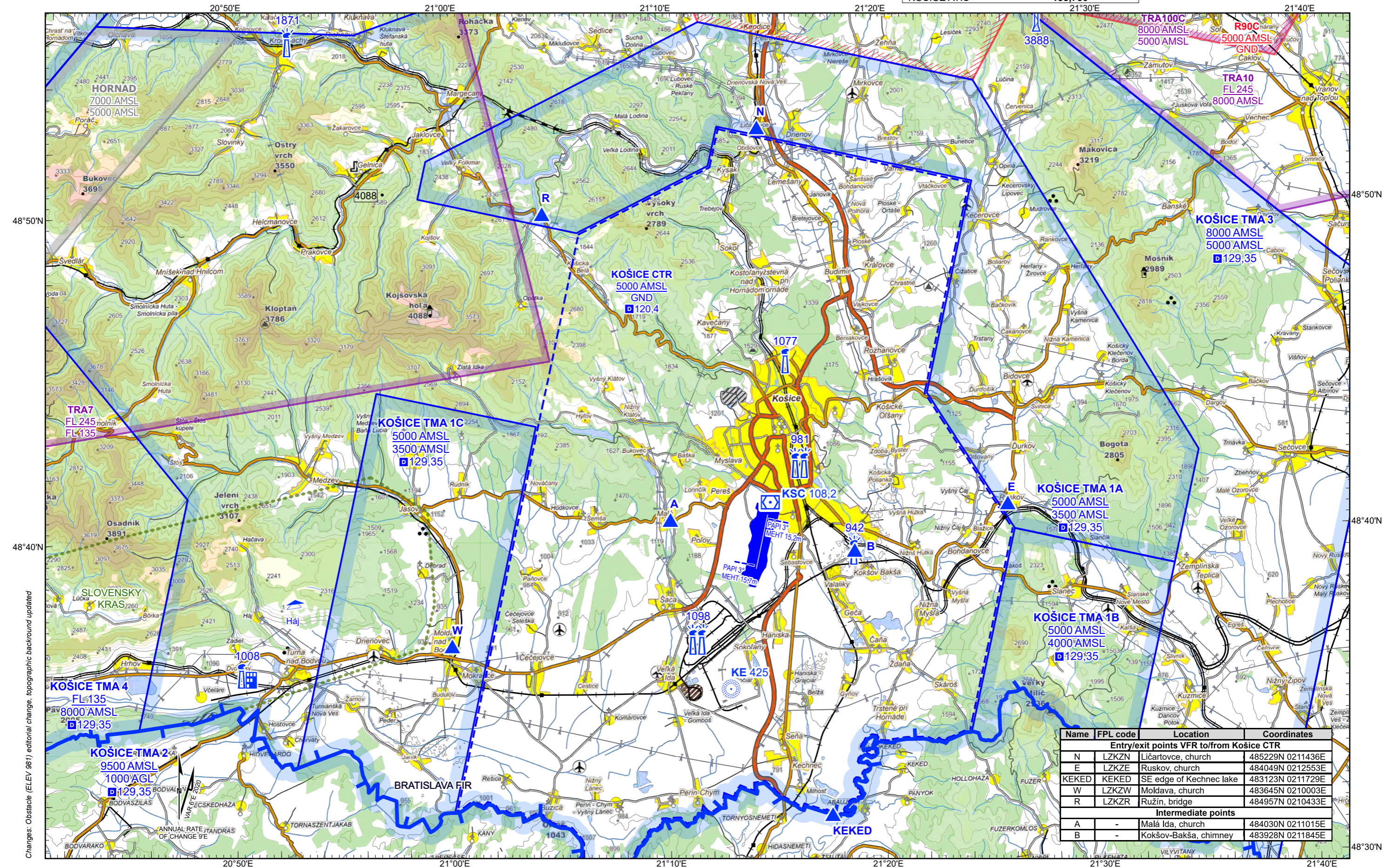
Input data	
Operation Type	0
SBAS Provider	1 (EGNOS)
Airport Identifier	LZKZ
Runway	19
Runway Letter	0 (None)
Approach Performance Designator	0
Route Indicator	
Reference Path Data Selector	0
Reference Path Identifier	E19A
LTP/FTP Latitude	484035.8065N
LTP/FTP Longitude	0211445.2485E
LTP/FTP Ellipsoidal Height (metres)	269.8
FPAP Latitude	483858.0125N
Delta FPAP Latitude (seconds)	-97.7940
FPAP Longitude	0211411.0615E
Delta FPAP Longitude (seconds)	-34.1870
Threshold Crossing Height	15.0
TCH Units Selector	1 (meters)
Glidepath Angle (degrees)	3.00
Course Width (metres)	105.00
Length Offset (metres)	0
HAL (metres)	40.0
VAL (metres)	35.0
Output data	
Data Block	10 1A 0B 1A 0C 13 00 00 01 39 31 05 BD C5 E3 14 01 25 1E 09 8A 1E FC 03 FD EA F4 FE 2C 81 2C 01 64 00 C8 AF 56 14 7E 48
Calculated CRC Value	56147E48
Required Additional Data	
ICAO Code	LZ
LTP/FTP Orthometric Height (metres)	229.4

VISUAL APPROACH CHART - ICAO

ARP 48°39'47"N 021°14'28"E
AD ELEV 755 ft

KOŠICE APPROACH / RADAR 129,350 (119,850)
KOŠICE TOWER 120,400 (118,900)
KOŠICE ATIS 133,730

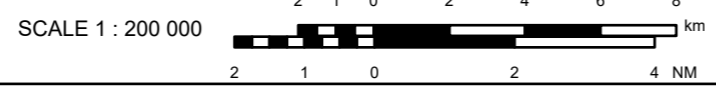
KOŠICE



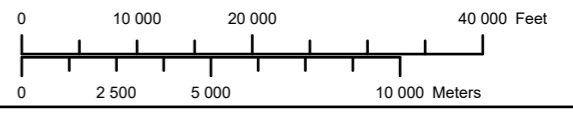
Changes: Obstacle (ELEV 981) editorial change, topographic background updated

Name	FPL code	Location	Coordinates
Entry/exit points VFR to/from Košice CTR			
N	LZKZN	Ličartove, church	485229N 0211436E
E	LZKZE	Ruskov, church	484049N 0212553E
KEKED	KEKED	SE edge of Kechnec lake	483123N 0211729E
W	LZKZW	Moldava, church	483645N 0210003E
R	LZKZR	Ružín, bridge	484957N 0210433E
Intermediate points			
A	-	Malá Ida, church	484030N 0211015E
B	-	Kokšov-Bakša, chimney	483928N 0211845E

BEARINGS: magnetic
ALTITUDES & ELEVATIONS: ft
CONTOUR VALUES & SPOT ELEVATIONS: ft

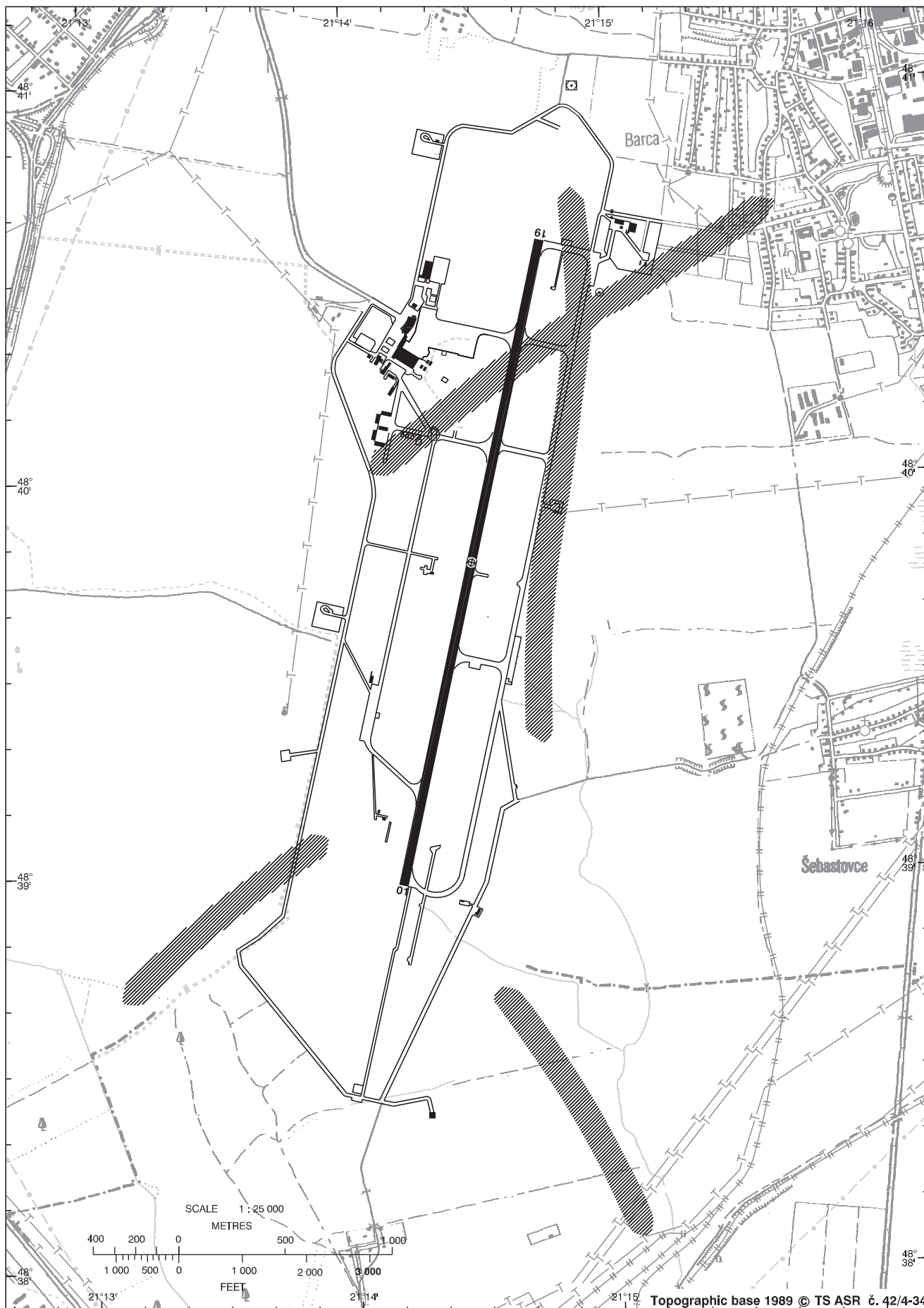


CONVERSION SCALE
for HEIGHTS or ELEVATIONS



BIRD CONCENTRATIONS

KOŠICE

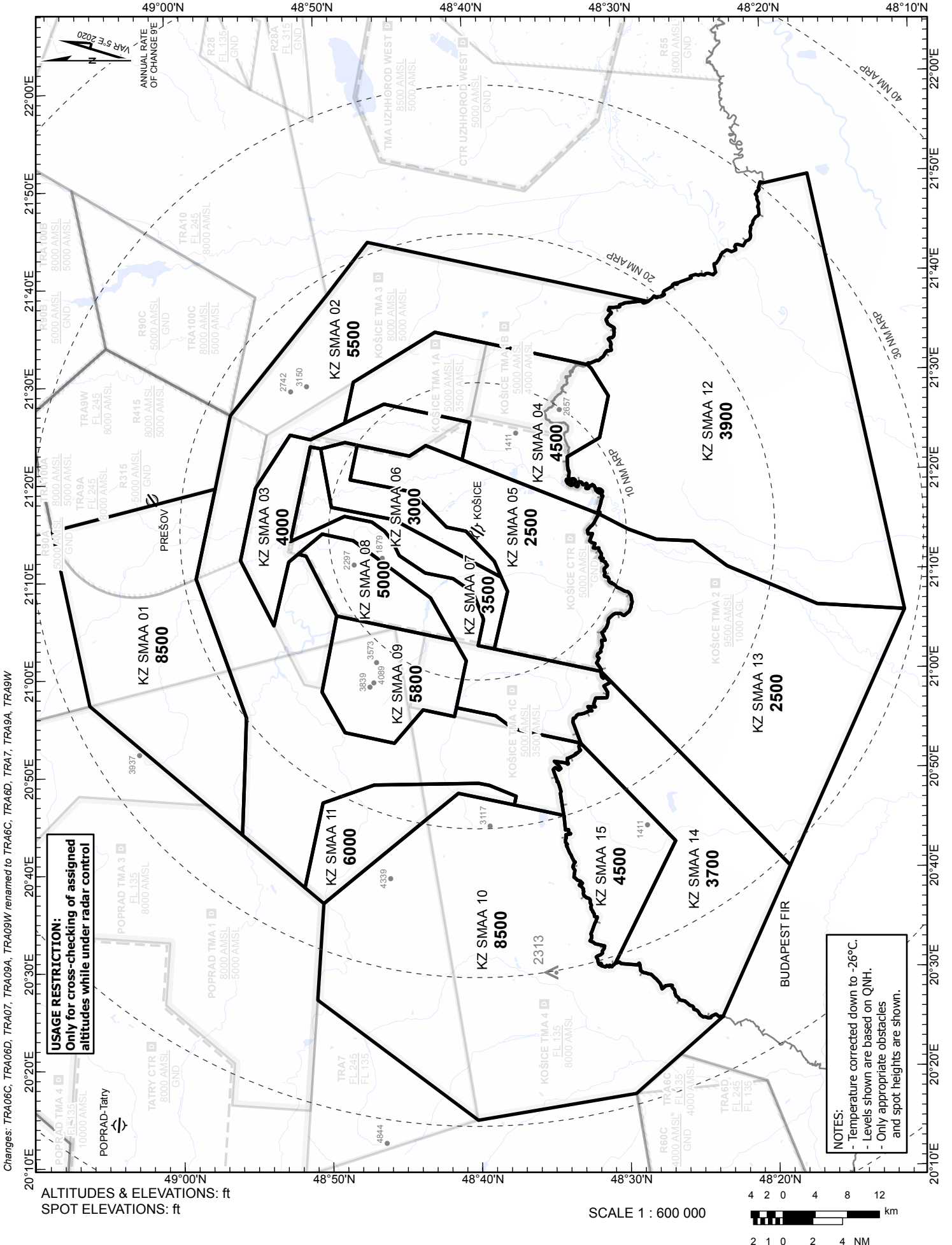


ATC SURVEILLANCE
MINIMUM ALTITUDE
CHART - ICAO

TRANSITION ALTITUDE
10 000 ft
AD ELEV 755 ft

KOŠICE APPROACH / RADAR
KOŠICE TOWER
KOŠICE ATIS
129,350 (119,850)
120,400 (118,900)
133,730

KOŠICE (LZKZ)



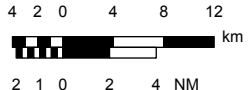
USAGE RESTRICTION:
Only for cross-checking of assigned altitudes while under radar control

NOTES:
- Temperature corrected down to -26°C.
- Levels shown are based on QNH.
- Only appropriate obstacles and spot heights are shown.

Changes: TRA06C, TRA06D, TRA07, TRA09A, TRA09W renamed to TRA6C, TRA6D, TRA7, TRA9A, TRA9W

ALTITUDES & ELEVATIONS: ft
SPOT ELEVATIONS: ft

SCALE 1 : 600 000



KZ SMAA 01 MNM ALT 8500 ft AMSL (ID: LZSLZK001)	
49°08'21"N	021°15'21"E
48°57'21"N	021°19'19"E
48°58'45"N	021°10'10"E
48°56'38"N	021°00'49"E
48°55'32"N	020°55'56"E
48°55'42"N	020°50'44"E
48°55'55"N	020°43'58"E
48°58'16"N	020°47'04"E
49°06'03"N	020°57'21"E
49°08'21"N	021°15'21"E

KZ SMAA 02 MNM ALT 5500 ft AMSL (ID: LZSLZK002)	
48°58'45"N	021°10'10"E
48°57'21"N	021°19'19"E
48°56'13"N	021°26'46"E
48°49'33"N	021°38'48"E
48°46'43"N	021°44'05"E
48°27'57"N	021°37'22"E
along state boundary to	
48°32'12"N	021°31'09"E
48°38'53"N	021°33'33"E
48°42'20"N	021°34'47"E
48°47'54"N	021°29'54"E
48°48'33"N	021°25'46"E
48°50'52"N	021°24'09"E
48°52'14"N	021°24'39"E
48°54'38"N	021°19'18"E
48°55'45"N	021°11'58"E
48°53'35"N	021°05'16"E
48°52'30"N	021°11'44"E
48°51'52"N	021°12'30"E
48°51'20"N	021°12'18"E
48°49'21"N	021°06'09"E
48°50'26"N	020°58'26"E
48°48'55"N	020°54'15"E
48°45'37"N	020°53'06"E
48°43'39"N	020°56'26"E
48°41'33"N	020°55'43"E
48°41'25"N	020°56'37"E
48°38'47"N	020°55'44"E
48°37'35"N	020°54'21"E
48°33'06"N	020°52'49"E
along state boundary to	
48°34'18"N	020°45'31"E
48°37'37"N	020°46'39"E
48°37'29"N	020°47'32"E
48°39'17"N	020°48'40"E
48°39'59"N	020°48'54"E
48°47'01"N	020°48'53"E
48°50'29"N	020°47'08"E
48°51'46"N	020°38'31"E
48°55'55"N	020°43'58"E
48°55'42"N	020°50'44"E
48°55'32"N	020°55'56"E
48°56'38"N	021°00'49"E
48°58'45"N	021°10'10"E

KZ SMAA 03 MNM ALT 4000 ft AMSL (ID: LZSLZK003)	
48°55'45"N	021°11'58"E
48°54'38"N	021°19'18"E
48°52'14"N	021°24'39"E
48°50'52"N	021°24'09"E
48°48'33"N	021°25'46"E
48°45'53"N	021°27'36"E
48°40'08"N	021°25'33"E
48°40'43"N	021°21'45"E
48°43'08"N	021°23'17"E
48°44'15"N	021°22'15"E
48°47'44"N	021°23'29"E
48°48'33"N	021°23'47"E
48°50'12"N	021°23'12"E
48°50'53"N	021°23'25"E
48°52'22"N	021°13'49"E
48°48'42"N	021°16'16"E
48°46'52"N	021°15'38"E
48°46'01"N	021°14'41"E
48°45'33"N	021°13'46"E
48°45'04"N	021°12'10"E
48°43'21"N	021°10'21"E
48°41'29"N	021°09'43"E
48°40'09"N	021°08'17"E
48°39'29"N	021°05'31"E
48°39'53"N	021°02'53"E
48°38'48"N	021°02'30"E
48°31'39"N	021°00'03"E
along state boundary to	
48°33'06"N	020°52'49"E
48°37'35"N	020°54'21"E
48°38'47"N	020°55'44"E
48°41'25"N	020°56'37"E
48°40'42"N	021°01'21"E
48°43'01"N	021°07'48"E
48°48'08"N	021°13'47"E
48°50'13"N	021°14'31"E
48°51'52"N	021°12'30"E
48°52'30"N	021°11'44"E
48°53'35"N	021°05'16"E
48°55'45"N	021°11'58"E

KZ SMAA 04 MNM ALT 4500 ft AMSL (ID: LZSLZK004)	
48°48'33"N	021°25'46"E
48°47'54"N	021°29'54"E
48°42'20"N	021°34'47"E
48°38'53"N	021°33'33"E
48°32'12"N	021°31'09"E
48°32'10"N	021°31'10"E
48°31'53"N	021°30'43"E
48°30'47"N	021°27'56"E
48°31'26"N	021°23'42"E
48°33'38"N	021°21'50"E
along state boundary to	
48°31'34"N	021°15'58"E
48°37'34"N	021°19'44"E
48°40'43"N	021°21'45"E
48°40'08"N	021°25'33"E
48°45'53"N	021°27'36"E
48°48'33"N	021°25'46"E

KZ SMAA 05 MNM ALT 2500 ft AMSL (ID: LZSLZK005)	
48°48'16"N	021°19'58"E
48°47'44"N	021°23'29"E
48°44'15"N	021°22'15"E
48°43'08"N	021°23'17"E
48°40'43"N	021°21'45"E
48°37'34"N	021°19'44"E
48°31'34"N	021°15'58"E
along state boundary to	
48°31'39"N	021°00'03"E
48°38'48"N	021°02'30"E
48°37'50"N	021°08'19"E
48°38'14"N	021°09'46"E
48°38'41"N	021°11'24"E
48°40'33"N	021°14'30"E
48°41'51"N	021°14'58"E
48°44'06"N	021°18'37"E
48°48'16"N	021°19'58"E

KZ SMAA 06 MNM ALT 3000 ft AMSL (ID: LZSLZK006)	
48°50'12"N	021°23'12"E
48°48'33"N	021°23'47"E
48°47'44"N	021°23'29"E
48°48'16"N	021°19'58"E
48°44'06"N	021°18'37"E
48°41'51"N	021°14'58"E
48°40'33"N	021°14'30"E
48°38'41"N	021°11'24"E
48°38'14"N	021°09'46"E
48°45'24"N	021°15'50"E
48°49'34"N	021°17'13"E
48°50'12"N	021°23'12"E

KZ SMAA 07 MNM ALT 3500 ft AMSL (ID: LZSLZKZ007)	
48°52'22"N	021°13'49"E
48°50'53"N	021°23'25"E
48°50'12"N	021°23'12"E
48°49'34"N	021°17'13"E
48°45'24"N	021°15'50"E
48°38'14"N	021°09'46"E
48°37'50"N	021°08'19"E
48°38'48"N	021°02'30"E
48°39'53"N	021°02'53"E
48°39'29"N	021°05'31"E
48°40'09"N	021°08'17"E
48°41'29"N	021°09'43"E
48°43'21"N	021°10'21"E
48°45'04"N	021°12'10"E
48°45'33"N	021°13'46"E
48°46'01"N	021°14'41"E
48°46'52"N	021°15'38"E
48°48'42"N	021°16'16"E
48°52'22"N	021°13'49"E

KZ SMAA 08 MNM ALT 5000 ft AMSL (ID: LZSLZKZ008)	
48°51'52"N	021°12'30"E
48°50'13"N	021°14'31"E
48°48'08"N	021°13'47"E
48°43'01"N	021°07'48"E
48°41'27"N	021°03'25"E
48°43'26"N	021°04'06"E
48°45'26"N	021°04'48"E
48°49'21"N	021°06'09"E
48°51'20"N	021°12'18"E
48°51'52"N	021°12'30"E

KZ SMAA 09 MNM ALT 5800 ft AMSL (ID: LZSLZKZ009)	
48°50'26"N	020°58'26"E
48°49'21"N	021°06'09"E
48°45'26"N	021°04'48"E
48°43'26"N	021°04'06"E
48°41'27"N	021°03'25"E
48°40'42"N	021°01'21"E
48°41'25"N	020°56'37"E
48°41'33"N	020°55'43"E
48°43'39"N	020°56'26"E
48°45'37"N	020°53'06"E
48°48'55"N	020°54'15"E
48°50'26"N	020°58'26"E

KZ SMAA 10 MNM ALT 8500 ft AMSL (ID: LZSLZKZ010)	
48°51'00"N	020°27'04"E
48°50'31"N	020°36'53"E
48°47'44"N	020°40'15"E
48°43'29"N	020°45'23"E
48°41'22"N	020°47'55"E
48°37'37"N	020°46'39"E
48°34'18"N	020°45'31"E
along state boundary to	
48°23'46"N	020°24'59"E
48°29'37"N	020°17'18"E
48°40'16"N	020°14'42"E
48°51'00"N	020°27'04"E

KZ SMAA 11 MNM ALT 6000 ft AMSL (ID: LZSLZKZ011)	
48°51'46"N	020°38'31"E
48°50'29"N	020°47'08"E
48°47'01"N	020°48'53"E
48°39'59"N	020°48'54"E
48°39'17"N	020°48'40"E
48°37'29"N	020°47'32"E
48°37'37"N	020°46'39"E
48°41'22"N	020°47'55"E
48°43'29"N	020°45'23"E
48°47'44"N	020°40'15"E
48°50'31"N	020°36'53"E
48°51'46"N	020°38'31"E

KZ SMAA 12 MNM ALT 3900 ft AMSL (ID: LZSLZKZ012)	
48°33'38"N	021°21'50"E
48°31'26"N	021°23'42"E
48°30'47"N	021°27'56"E
48°31'53"N	021°30'43"E
48°32'10"N	021°31'10"E
along state boundary to	
48°20'00"N	021°49'01"E
48°17'03"N	021°49'53"E
48°11'10"N	021°05'51"E
48°17'02"N	021°06'30"E
48°23'02"N	021°10'29"E
48°25'16"N	021°13'03"E
48°27'46"N	021°13'18"E
48°29'40"N	021°14'25"E
48°31'34"N	021°15'58"E
along state boundary to	
48°33'38"N	021°21'50"E

KZ SMAA 13 MNM ALT 2500 ft AMSL (ID: LZSLZKZ013)	
48°31'34"N	021°15'58"E
48°29'40"N	021°14'25"E
48°27'46"N	021°13'18"E
48°25'16"N	021°13'03"E
48°23'02"N	021°10'29"E
48°17'02"N	021°06'30"E
48°11'10"N	021°05'51"E
48°19'07"N	020°40'12"E
48°25'04"N	020°49'38"E
48°31'39"N	021°00'03"E
along state boundary to	
48°31'34"N	021°15'58"E

KZ SMAA 14 MNM ALT 3700 ft AMSL (ID: LZSLZKZ014)	
48°33'06"N	020°52'49"E
along state boundary to	
48°31'39"N	021°00'03"E
48°25'04"N	020°49'38"E
48°19'07"N	020°40'12"E
48°23'46"N	020°24'59"E
along state boundary to	
48°30'57"N	020°30'32"E
48°26'48"N	020°42'49"E
48°33'06"N	020°52'49"E

KZ SMAA 15 MNM ALT 4500 ft AMSL (ID: LZSLZKZ015)	
48°33'06"N	020°52'49"E
48°26'48"N	020°42'49"E
48°30'57"N	020°30'32"E
along state boundary to	
48°33'06"N	020°52'49"E